

destination:  
**Boston**



### Doubletree Guest Suites® Boston

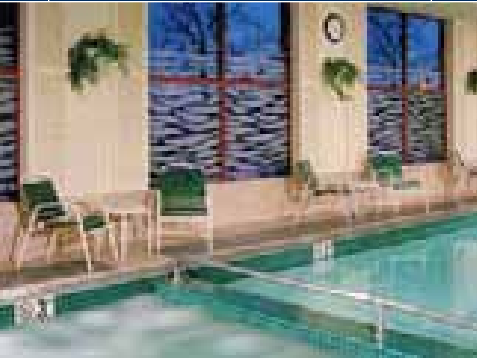
Overlooking the picturesque Charles River and just half a mile from Harvard Square, Doubletree Guest Suites Boston, the area's premier all-suite, full-service hotel, puts you close to Boston's museums, historic sites, universities, medical centers, shopping and Logan International Airport.

### LOOKING FOR A GREAT DEAL IN BOSTON?

Visit [www.hiltonfamilyboston.com](http://www.hiltonfamilyboston.com) to view and book any of our fabulous offers and inclusive packages. For more information, call 1-800-222-TREE or contact the Doubletree Guest Suites Boston directly at 617-783-0090.

### HOLDING A MEETING? CONSIDER BOSTON!

View our unique meeting and banquet facilities and submit a Request for Proposal at [www.hiltonfamilyboston.com](http://www.hiltonfamilyboston.com). For more details or assistance, call our expert sales team at the Boston Regional Sales Center at 617-583-1100 or by email at [boston\\_rsc@hilton.com](mailto:boston_rsc@hilton.com).



### Facilities & Services

- 308 two-room suites rise 15 stories around a dramatic skylit atrium
- Express check-in and check-out
- Complimentary scheduled shuttle to local areas and attractions (reservations required)
- Ample valet and self-parking
- Complimentary 24-hour self-service Business Center
- Non-smoking & accessible suites available

### Suite Amenities

- High-Definition Flat Panel LCD television in parlor and 25" television in bedroom with pay-per-view movies, video games & complimentary HBO®
- Wireless High-Speed Internet Access and remote guestroom printing
- A large living room with sofa bed, separate bedroom with king-size bed (or two twin beds)
- Sweet Dreams® by Doubletree sleep experience with plush-top mattress, luxurious linens, down comforter and jumbo pillows
- Refrigerator, wet bar and coffeemaker with complimentary coffee
- Two dual-line speaker phones with voice mail and data ports
- Work-friendly desk
- USA TODAY® delivered each weekday morning
- Iron and ironing board; hairdryer
- Individual climate control
- Electronic door locks

### Recreation

- Heated indoor pool, whirlpool and sauna
- Fully equipped fitness room
- Cycling and jogging path right outside our door

### Dining & Entertainment

- Boathouse Grille, serving a full menu for breakfast, lunch and dinner
- Terrace Lounge for lite fare and evening beverages with 42" High-Definition TVs to watch your favorite teams
- Scullers Jazz Club voted Boston's #1 jazz club (visit [www.scullersjazz.com](http://www.scullersjazz.com))
- In-suite dining

### Surrounding Attractions

- All of the renowned attractions of Boston and Cambridge are within easy access of our hotel
- Minutes from Harvard Square, Harvard University, M.I.T., Boston University, Boston College and Colleges of the Fens area
- TD Banknorth Garden (home of the Celtics & Bruins) and Fenway Park (home of the Red Sox)
- Cultural exhibits including Symphony Hall, the Museum of Fine Arts, the Computer Museum, Museum of Science, Children's Museum and New England Aquarium
- Historic landmarks: Faneuil Hall Market Place, North End, Paul Revere House, Old North Church, Old State House and the U.S.S. Constitution

### Hilton HHonors®

- Hilton HHonors is the only guest reward program that lets you earn both hotel points and airline miles for the same stay at more than 2,800 hotels worldwide.
- With the Hilton HHonors Event Planner program, Event Planners can earn Points & Miles® for qualifying events. Ask your sales person for details.

[www.hiltonfamilyboston.com](http://www.hiltonfamilyboston.com)  
1-617-583-1100

### Doubletree Guest Suites Boston

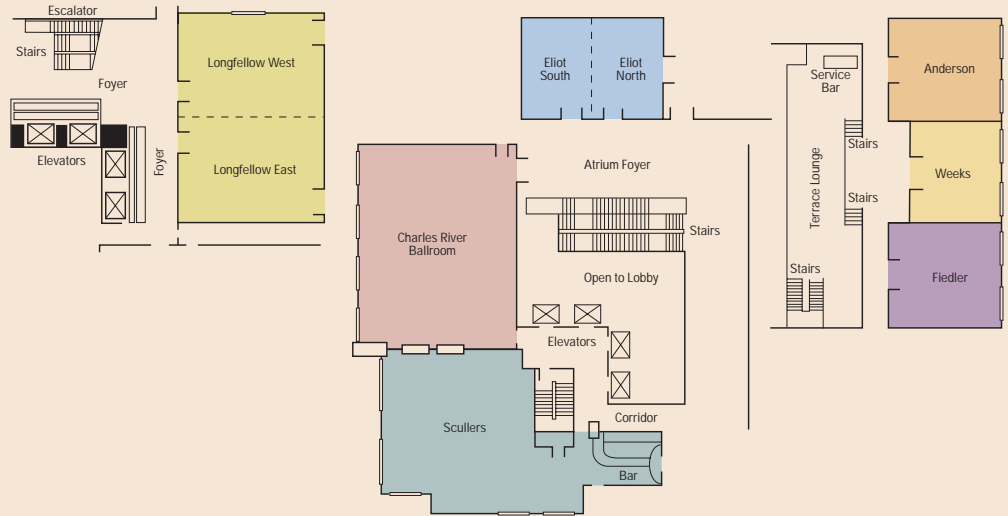
400 Soldiers Field Road  
Boston, Massachusetts 02134  
Tel: (617) 783-0090  
Fax: (617) 783-0897

[www.hiltonfamilyboston.com/boston](http://www.hiltonfamilyboston.com/boston)

### GDS CODES:

Amadeus: BOS017  
Apollo / Galileo: 24816  
Sabre: 10448  
WorldSpan: 105

## Meeting & Banquet Facilities



Capacities	Total Sq ft	L x W x H	Classroom	Theater	Banquet 10	Reception	Conference	U-Shape	H-Square
Longfellow	2,627	37 x 71 x 12'	150	250	200	325	—	68	—
Longfellow-East	1,000	37 x 27 x 12'	50	90	60	130	35	30	30
Longfellow-West	1,628	37 x 44 x 12'	95	160	110	175	45	46	55
Charles River	2,096	41.5 x 50.42 x 10.5'	108	200	180	290	68	50	68
Scullers	1,800	53 x 45 x 10.5'	—	150	130	200	—	—	—
Charles River/Scullers	3,896	59 x 95.5 x 10.5'	300	300	300	480	—	—	—
Eliot	962	37 x 26 x 11'	50	80	80	100	35	35	40
Eliot-North	481	18 x 26 x 11'	24	40	40	50	20	20	20
Eliot-South	481	18 x 26 x 11'	24	40	40	50	20	20	20
Anderson	725	29 x 25 x 8.5'	30	50	50	50	25	20	25
Fiedler	725	29 x 25 x 8.5'	30	50	50	50	25	20	25
Weeks	542	24 x 23 x 8.5'	27	50	40	50	20	20	20
Rooftop Terrace	N/A	N/A	—	—	—	150	—	—	—
Executive Meeting Suite	426	N/A	—	—	—	—	8	—	—

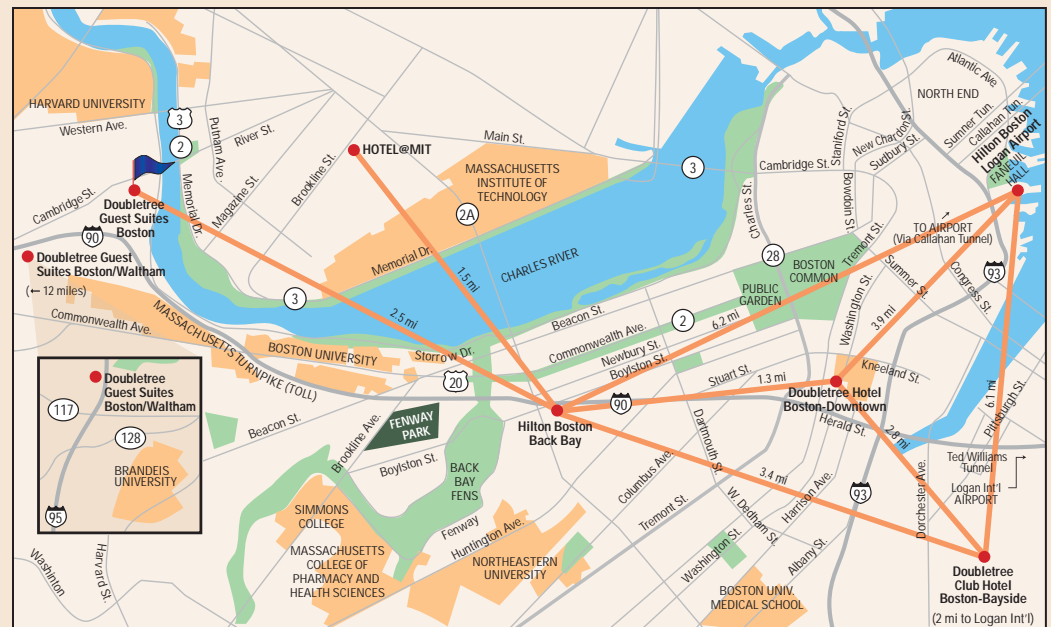
### Meeting and Banquet Facilities

- Meeting and banquet facilities to accommodate groups from 10 to 480 persons
- Eight Meeting Rooms and seven Executive Meeting Suites including the Longfellow Ballroom and the Charles River Ballroom
- Wireless High-Speed Internet Access in all meeting rooms and throughout the hotel
- Roof top terrace featuring views of the Charles River and downtown Boston for groups up to 175
- State-of-the-art A/V equipment and services
- Professional meeting and catering specialists to oversee every detail

[www.hiltonfamilyboston.com](http://www.hiltonfamilyboston.com)  
1-617-583-1100

**Doubletree Guest Suites Boston**  
400 Soldiers Field Road  
Boston, Massachusetts 02134  
Tel: (617) 783-0090  
Fax: (617) 783-0897  
[www.hiltonfamilyboston.com/boston](http://www.hiltonfamilyboston.com/boston)

**GDS CODES:**  
Amadeus: BOS017  
Apollo / Galileo: 24816  
Sabre: 10448  
WorldSpan: 105



The Hilton HHonors Event Planner bonus is valid for new event bookings only and is awarded at the discretion of the hotel and may not be awarded on all group business events. Other restrictions may apply. For complete Event Planner Terms and Conditions, visit [www.hiltonhonors.com](http://www.hiltonhonors.com). \*Subject to state and local laws. Hilton HHonors® membership, earning of Points and Miles,® and redemption of points are subject to HHonors Terms and Conditions. 6/07 HSM/Swafford&Co35223 ©2007 Hilton Hospitality, Inc.